

## OSH in the news

### 46 PERATUS SELAMAT

Berita Harian, 25/04/08

Sebanyak 46 atau 30 peratus daripada 150 jabatan dan agensi kerajaan di sleuruh Negara mencapai tahap baik dari segi keselamatan di tempat kerja seperti yang ditetapkan Akta Keselamatan dan Kesihatan Pekerjaan (Osha) 1994.

Bercakap pada sidang media selepas perasmian Seminar Keselamatan dan Kesihatan Pekerjaan di Sektor Awam yang dianjurkan JKKP Selangor di Hotel Concorde di sini semalam, Timbalan Ketua Pengarah (Operasi), Jabatan Keselamatan dan Kesihatan Pekerjaan (JKKP), Rosli Hussin, berkata audit yang dilakukan baru-baru ini mendapati 104 atau 70 peratus jabatan dan agensi kerajaan berada hanya pada tahap memuaskan tetapi tidak memainkan peranan sewajarnya.

### THREE IN DEATH FALL: STOP-WORK ORDER IN PLACE TILL INVESTIGATIONS COMPLETE

The Star, 01/04/08

Kuala Lumpur: Construction work at a low-cost flat project in Kampung Sungai Sering here, where three workers fell to their deaths, has stopped following a stop-work order, said Human Resources Minister Datuk Dr S. Subramaniam.

He said the order would hold until further investigations and "we are satisfied with their safety measures."

"Only then will allow them to continue with their work," he told reporters after visiting the site in Bukit Antarabangsa.

At 9.30am on Saturday, three Indonesian construction workers fell to their deaths from the 13th floor of the flats when the gondola they were in tilted and slipped.

Subramaniam said that the workers, identified as Sriadi, 36, Mastam, 33, and Suprato, 21, were in the gondola doing plastering work.

"I am told the workers had also brought up cement with them on the gondola.

"The maximum weight on the gondola can carry is 350kg, but with the workers plus the cement, I believe it would have been more than the maximum weight allowed," he said.

He said the cause of the accident was due to one of the four metal cables holding the gondola becoming loose, causing the gondola to tilt and slip.

"The gondolas are also supposed to have a braking system as a safety measures in case the cables broke, but it seems that the braking system was also not functioning.

"Initials investigations by DOSH (Department of Occupational Safety and Health) found that the safety measures were not allowed.

After a thorough investigation, if this is indeed proven, the ministry will take legal action against the company," Dr Subramaniam said.

He also said that the construction company could be fined up to RM50, 000 and the employers could face up to two years' jail.

To prevent such accidents from occurring in future, Dr Subramaniam said his ministry would focus on the legal safety requirements.

### KESIHATAN MENTAL TEMPAT KERJA

Berita Harian, 14/04/08

Kuala Lumpur: Majikan dan kesatuan sekerja digesa mengambil langkah bersama mempromosikan kesihatan mental di tempat kerja bagi menangani masalah dihadapi pekerja negara ini.

Pengerusi Institut Keselamatan dan Kesihatan Pekerjaan Negara (Niosh), Tan Sri Lee Lam Thee, berkata pihaknya percaya langkah itu mampu menangani masalah berkenaan, sekali gus membantu memperbaiki mutu kerja.

Beliau berkata, majikan tidak boleh mengabaikan aspek itu dan perlu diambil perhatian sewajarnya berikutan pendedahan Pertubuhan Kesihatan Sedunia (WHO) menunjukkan penyakit itu antara lima penyebab utama kecacatan atau hilang upaya.

"Apa yang lebih membimbangkan masalah kini tidak hanya terhad kepada mereka di institusi mental, malah, membabitkan orang biasa. Justeru, masalah itu harus ditangani lebih awal untuk mengelakkan sebarang keadaan lebih buruk.

"Kesan terhadap psikologi, social dan ekonomi melumpuhkan produktiviti kerja sesebuah syarikat kerana tenaga sumbernya gagal bekerja dengan baik berikutan kesihatan mental," katanya menerusi kenyataan media, semalam.

## OSH in the news



your preferred partner to enhance OSH



NIOSH Malaysia Newsletter...bringing you OSH updates

www.niosh.com.my

## Editorial

WE APPRECIATE YOUR CONTRIBUTION  
Articles, views, Suggestions,  
Comments and feedback may be sent to :

The Editor  
For Your Info

NIOSH  
Lot 1, Jalan 151/1, Section 15,  
43650 Bandar Baru Bangi,  
Selangor.  
Tel: 8768 2100  
Fax: 8893 8500  
oshinfo@niosh.com.my

FYI is published monthly by the Information Services Unit. Information and recommendations contained in this publication are compiled from sources believed to be reliable. NIOSH makes no guarantee as to and assumes no responsibility for the correctness, sufficiency or completeness of such informations and recommendation. Other additional safety measures may be required under particular circumstance. Articles may be reproduced with the permission from the Editor.

NO	COURSES	NO OF DAYS	COURSE FEE (RM)	COURSE CODE	HRDF SCHEME	MAY	JUN	JUL
01	Basic Offshore Occupational First Aid	4	1,000.00	OSFA	SBL			23-26
02 *	Certificate Programme for Safety & Health Officer (Full Time)	22	4,000.00	SHO	SBL	07 Apr-02 May(E)	09 Jun-04 Jul(M)	
03 *	Certificate Programme for Safety & Health Officer (Modular)	22	4,000.00	SHOM	SBL			
	Module 1	6				05-09	23-28	21-25
	Module 2	6						
	Module 3	6					0-14	14-18
	Module 4	5				19-23		
	Chemical Health Risk Assessor (CHRA)							
CEP 04	Control of Chemicals Hazardous to Health (CHRA Module 2)	3	1,200.00	CCHH	SBL			1-19
CEP 05	Chemical Health Risk Assessment (CHRA Module 3)	5	2,500.00	CHRA	SBL			21-25
CEP 06	High Pressure Water Jetting Competency Programme <b>NEW</b>	3	1,280.00	HPWJ	SBL	20-22		08-10
CEP 07	Indoor Air Quality for Assessor Industrial Hygiene Technician	5	3,000.00	IAQ	SBL	12-16		
CEP 08	Monitoring of Chemical Hazardous to Health	5	3,000.00	IHT1	SBL			
CEP 09	Monitoring of Noise Exposure	4	1,600.00	MNE	SBL	19-22		
CEP 10	Safe Handling of Forklift Truck Competency Programme Scaffolding 3 in 1	3	1,900.00	SHFT	SBL			1-17
	11 Scaffolding 3 in 1 (Frame / Tubular / Modular) - Basic	8	2,500.00	BSC	SBL	19 - 28		
	12 Scaffolding 3 in 1 (Frame / Tubular / Modular) - Intermediate	10	3,700.00	ISC	SBL			
	13 Scaffolding 3 in 1 (Frame / Tubular / Modular) - Advanced	10	5,000.00	ASC	SBL		16 - 27	
CEP 14	Occupational Health Doctor (OHD) - Module 1 (Workshop)	3	600.00	OHD1	SBL			
	OHD - Module 2	3	1,500.00	OHD2	SBL	23-25		11-12
	OHD - Module 3	3	1,500.00	OHD3	SBL		27-28	
CEP 15	Occupational Health Nurse (OHN)	13	6,100.00	OHN	SBL			
	OHN Module 1	6						07-12
	OHN Module 2	6						
	OHN Refresher	2						
	<b>Trainer's Programmes</b>							
	16 Safety and Health Induction For Construction Workers	4	2,000.00	SICW	SBL			24-27
	17 Trainer's Competency Programme (Modular) <b>NEW EDITION</b>	10	4,050.00	TTT	SBL			
CEP	Module 1: Basic Train the Trainer	4	1,200.00	TTT1	SBL	26-29	16-19	14-17
	Module 2: Advanced Train the Trainer	4	2,100.00	TTT2	SBL			
	18 Trainer's Competency Programme (Part Time - Sat & Sun)	10	4,050.00	TTT	SBL			
CEP	Module 1: Basic Train the Trainer	4	1,200.00	TTT1	SBL			
CEP	Module 2: Advanced Train the Trainer	4	2,100.00	TTT2	SBL	17-25		



your preferred partner to enhance OSH

www.niosh.com.my



NIOSH Malaysia Newsletter...bringing you OSH updates

# 4 APRIL 2008



your preferred partner to enhance OSH



your preferred partner to enhance OSH

## 'WORLD DAY FOR SAFETY AND HEALTH AT WORK' 28TH APRIL 2008



### BACKGROUND

The concept of having a World Day for Safety and Health at Work is rooted in the Workers Memorial Day, which was started by American and Canadian workers in 1939 in order to commemorate dead and injured workers annually on 28 April. The International Confederation of Free Trade Unions and Global Union Federations made this into a global event, expanding its scope to embrace the notion of sustainable work and workplaces. The International Commemoration Day for Dead and Injured Workers is now observed in over one hundred countries.

### REMEMBRANCE

On World Day for Safety and Health at Work, governments, employers' and workers' organizations are encouraged to conduct awareness-raising activities within their areas of influence on the theme of accident and ill-health prevention. Meanwhile, everyone engaged in the world is encouraged to consider their working practices and to identify whether preventative action could avoid injuries and ill health, not only on 28 April but throughout the year.

## 'WORLD DAY FOR SAFETY AND HEALTH AT WORK' 28TH APRIL 2008

On this day every year, government, employers and workers' organizations worldwide are encouraged to conduct awareness-raising activities within their areas of influence in efforts to reduce accidents and ill-health at the workplace.

World's Day for Safety and Health at work is also an annual event to increase awareness about how to make work safe and healthy as well as to raise the profile of occupational safety and health.

The theme for this year's World Day for Safety and Health at work is: 'My Life, My Work, My Safe Work-Managing Risk in the Work Environment'.

This theme was chosen by International Labour Organisation (ILO) to strongly encourage workers to examine the risks related to their own jobs.

The objective of the World Day for Safety and Health at Work is to focus international attention on promoting and creating a safety and health culture that can help to reduce the number of work-related deaths each year. Safety, after all, is the responsibility of all concerned.

Occupational Safety and Health (OSH) is of worldwide concern to governments, employers, workers and their families. While some industries are inherently more hazardous than others, groups such as migrant or other marginalized workers are often more at risk of experiencing work-related accidents and ill health, since poverty frequently forces them into unsafe occupations.

Work-related accidents and ill-health place intolerable human and economic burdens on workers and their families as well as on enterprises and on society as a whole.

In Malaysia, PERKESO estimates that the related economic costs due to compensation, lost working time, interruption of production, training and medical expenses are considerably high. Last year, the total compensation costs paid out by PERKESO for industrial accidents and occupational diseases was over RM 900 million.

Conversely, there is clear evidence that a healthy workforce can enhance business productivity, benefit enterprises and national economies by reducing the number of accidents and diseases and lowering the number of insurance and compensation claims.

The overall responsibility for providing a safe and healthy working environment rest with the employers who should demonstrate their commitment to OSH.

This can be done by building and maintaining a preventative safety and health culture that address the principles of prevention, hazard identification, risk assessment and control, information and training.

Workers on the other hand have a duty to cooperate with the employer in implementing this OSH programme. They should respect and apply procedures and other instructions designed to protect them and others present at the workplace from exposure to occupational hazards.

It is estimated that more than 2 million people die from work-related illness or accidents each year.

The World Day for Safety and Health at Work, celebrated worldwide including Malaysia, is an international campaign to promote safety and health at work.

Preserving human health is a key objective of social security, promoting and creating a safety and health culture can save lives and reduce costs to society.

## Parking Lots - Fall Prevention

### Do parking lots pose special hazards?

Parking lots are a special adjunct to many workplaces. Even though you may not be conducting your job there (unless you are a parking attendant or maintenance worker), there is still a possibility that you can be injured. Besides the risk of violence, the major risk includes falls resulting from slips and trips.

### What factors contribute to fall incidents on a parking lot?

A smooth, even, flat surface is ideal for walking because it reduces the likelihood of twisted ankles or loss of balance which can lead to falls and other painful mishaps. In fact, guidelines require that parking areas be level and even, with cracks, holes and lumps not exceeding 1 cm.

However, heavy use by both pedestrians and vehicle traffic both cause a parking surface to deteriorate. Figure 1 shows examples of damage to look for: broken pavement, and gratings.

Leaks and spills of engine oil or antifreeze, which commonly occur wherever cars are parked, can further add to risks of slips and falls.

In outdoor parking lots, severe weather conditions additionally aggravate even slight damage to the parking surface. As a consequence the risk for falls due to slips and trips is relatively high in this environment.

### Are speed bumps a fall hazard?

Speed bumps and tire stops are usually not necessary in a well-designed parking lot. Besides potentially causing damage to vehicles, they create a yet another hazard for tripping - see Figure 2. The layout of the parking area should make it impossible to drive unsafely or fast. Otherwise, if speed bumps or tire stops are absolutely necessary:

- locate them away from pedestrian traffic (such as at entrance and exit areas).
- use a speed bump sign and post the recommended speed wherever such bumps have to be used
- speed bumps should be designed according to the provisions of American National Standards Institute (ANSI) or Institute of Transportation Engineers (ITE) standards

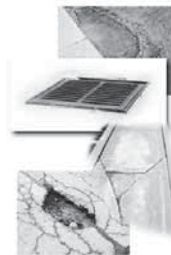


Figure 1



Figure 2



Figure 3

### Are tire stops hazardous?

Tire stops are serious tripping hazards particularly when parking slots are occupied. When tire stops are present, a few precautions are advised:

- they should no wider than the width of the vehicle
- they should be marked with a contrasting colour
- special attention should be paid to their regular maintenance because they deteriorate faster than other elements of the parking area - see Figures 3 and 4



Figure 4



Figure 5



Figure 6

### How can you prevent falls?

Falls can be prevented through a number of steps:

- good lighting
- good housekeeping
- good quality walking surface in the parking area
- paying attention to where you are going
- selection of proper footwear - see Figure 5
- appropriate walking pace: walk, don't run

### What does good housekeeping me-an in terms of parking lots?

Good housekeeping includes:

- cleaning all spills and oily spots immediately
- marking oily or icy spots and wet areas - see Figure 6
- clearing ice or snow as soon as possible
- removing clutter, debris and any obstacles from walkways

### What responsibilities do workers have?

Safety is everybody's duty, so workers as much as employers should:

- clean or report spills right away
- clear away clutter and debris, if they can
- report hazardous conditions to their supervisors
- remain aware that falls can happen anywhere, anytime